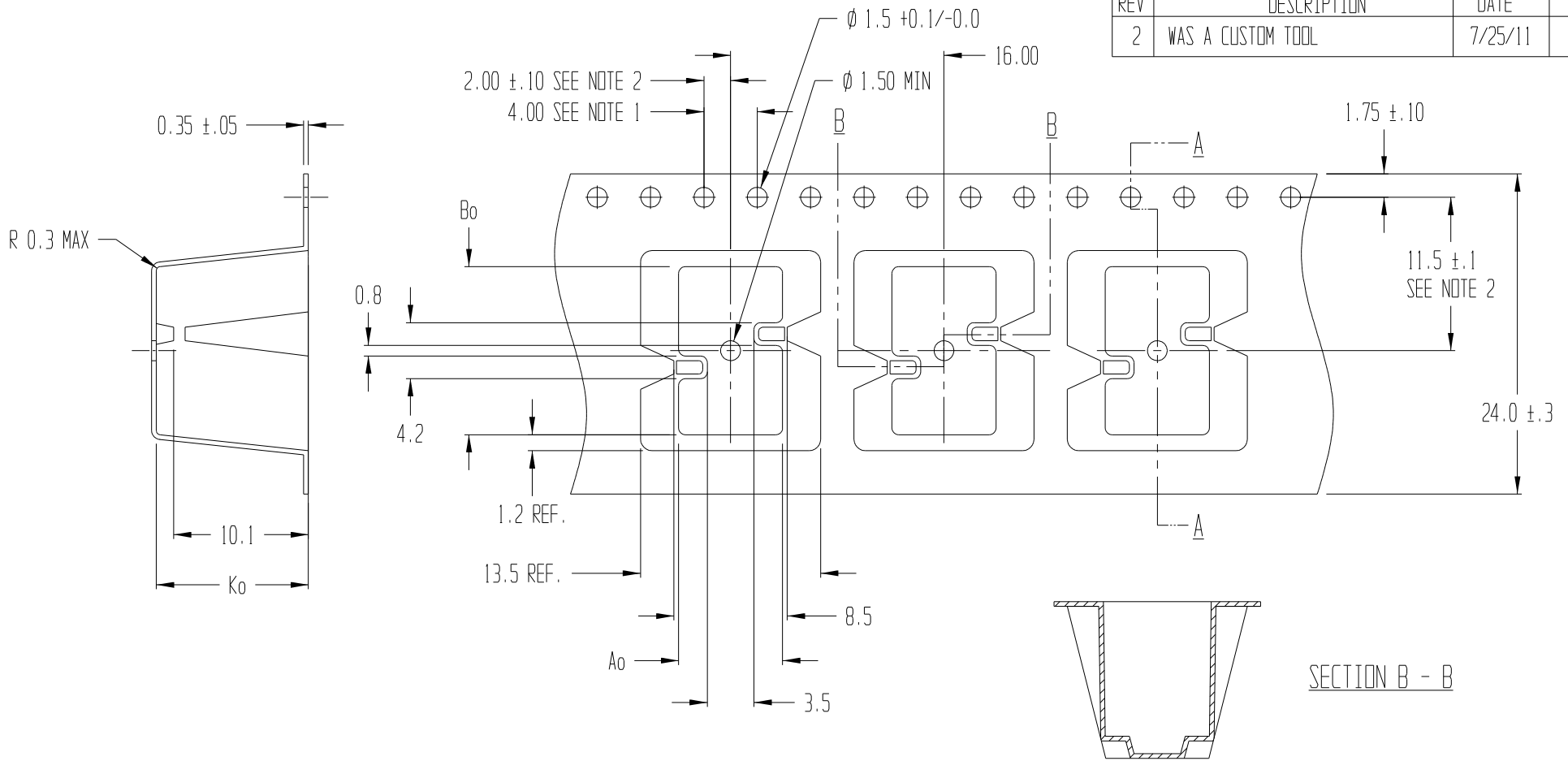


REVISIONS			
REV	DESCRIPTION	DATE	APPROVED
2	WAS A CUSTOM TOOL	7/25/11	TMD



SECTION A - A

Ao = 7.80
Bo = 12.60
Ko = 11.40

NOTES:

1. 10 SPROCKET HOLE PITCH CUMULATIVE TOLERANCE ± 0.2
2. POCKET POSITION RELATIVE TO SPROCKET HOLE MEASURED AS TRUE POSITION OF POCKET, NOT POCKET HOLE
3. Ao AND Bo ARE CALCULATED ON A PLANE AT A DISTANCE "R" ABOVE THE BOTTOM OF THE POCKET.



ADVANTEK[®]
engineered confidence™

TITLE ADVANTEK PART DRAWING NUMBER 06P001-A CARRIER TAPE			
TOLERANCES - UNLESS NOTED 1PL ± 0.2 2PL ± 0.10	MATERIAL PS+C	DWG SIZE B	
ALL DIMS IN MILLIMETERS PER ASME Y14.5M			
DRAWN BY RVR/BVB	DATE 6/10/99	SCALE 3:1	SHEET 1 OF 1
CK'D BY	PROJECT NO. T-8109 / 7667.00	DWG NO. T102281AT	REV 2