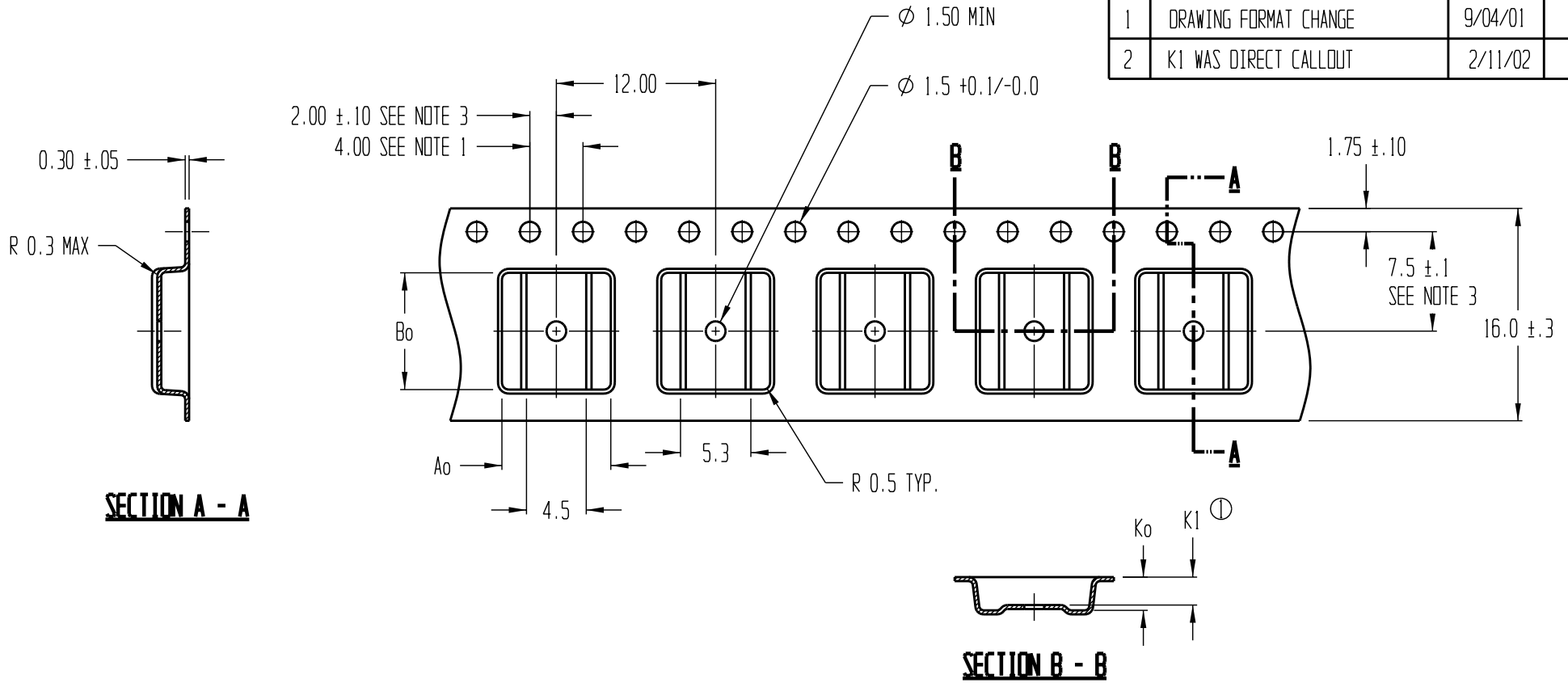


REVISIONS			
REV	DESCRIPTION	DATE	APPROVED
1	DRAWING FORMAT CHANGE	9/04/01	TMD
2	K1 WAS DIRECT CALLOUT	2/11/02	BTH



SECTION A - A

SECTION B - B

Ao = 8.20
 Bo = 8.80
 Ko = 2.50
 K1 = 2.10

NOTES:

1. 10 SPROCKET HOLE PITCH CUMULATIVE TOLERANCE ± 0.2
2. CAMBER IN COMPLIANCE WITH EIA 481
3. POCKET POSITION RELATIVE TO SPROCKET HOLE MEASURED AS TRUE POSITION OF POCKET, NOT POCKET HOLE



TITLE ADVANTEK PART DRAWING NUMBER SSOP24-C CARRIER TAPE			
TOLERANCES - UNLESS NOTED 1PL ± 0.2 2PL ± 0.10		MATERIAL PS+C	
DRAWN BY TMD		DATE 09/04/2001	SCALE 3:1
REFERENCE NO.		DWG NO. A1007-93-3	SHEET 1 OF 1
		REV 2	