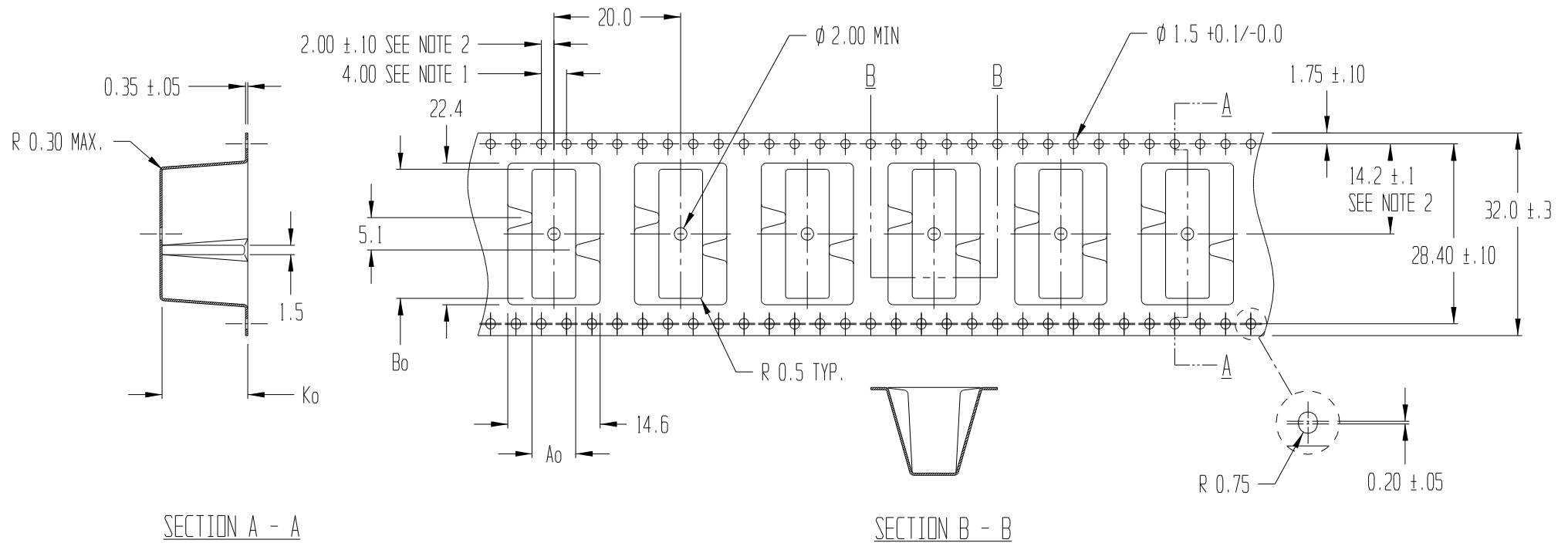


REVISIONS			
REV	DESCRIPTION	DATE	APPROVED
1	WAS CLOSED TOOL	3/11/11	TMD




$A_o = 6.9$
 $B_o = 20.4$
 $K_o = 13.5$

NOTES:

1. 10 SPROCKET HOLE PITCH CUMULATIVE TOLERANCE ± 0.2
2. POCKET POSITION RELATIVE TO SPROCKET HOLE MEASURED AS TRUE POSITION OF POCKET, NOT POCKET HOLE
3. A_o AND B_o ARE CALCULATED ON A PLANE AT A DISTANCE "R" ABOVE THE BOTTOM OF THE POCKET.



TITLE ADVANTEK PART DRAWING NUMBER EF0003-A CARRIER TAPE			
TOLERANCES - UNLESS NOTED 1PL ±.2 2PL ±.10		MATERIAL PS+C	DWG SIZE B
ALL DIMS IN MILLIMETERS PER ASME Y14.5M 			
DRAWN BY TMD	DATE 06/25/2004	SCALE 3:2	SHEET 1 OF 1
CK'D BY	PROJECT NO. T-12658-B / 7666.00	DWG NO. T104795BT	REV 1